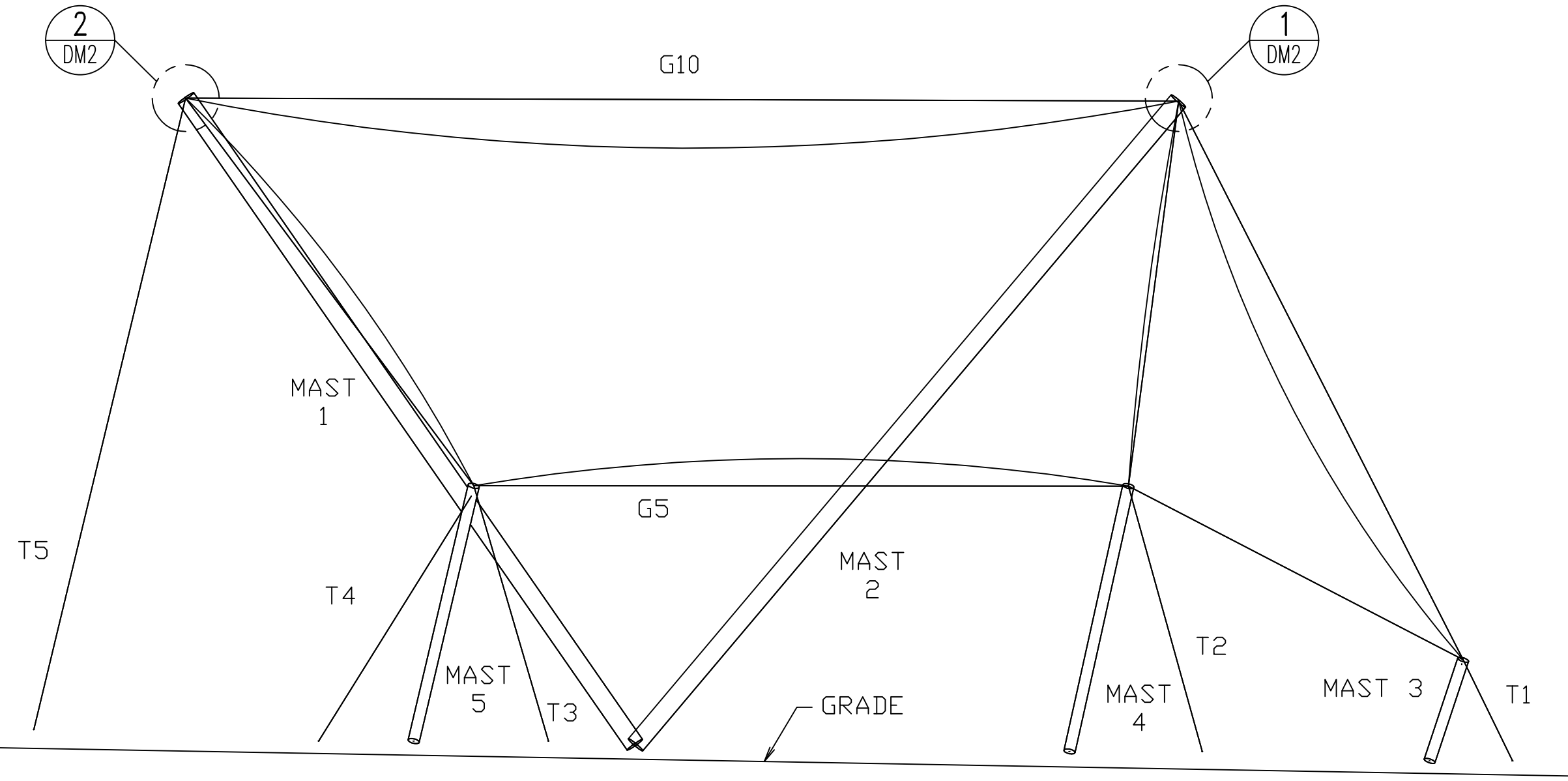


GENERAL NOTES

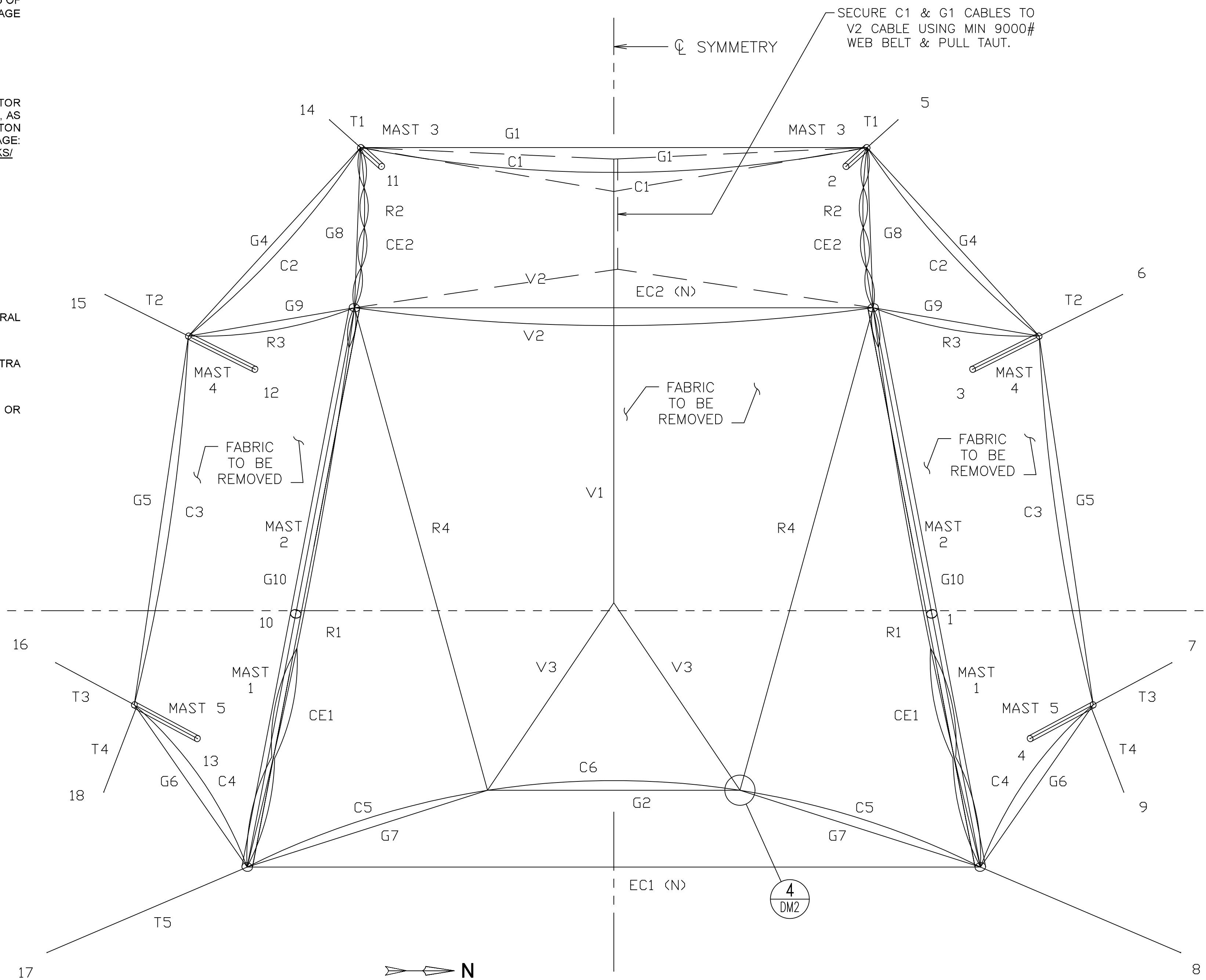
1. CHANGES TO THESE PLANS OR THEIR USE FOR PROJECT OR APPLICATION NOT ORIGINALLY INTENDED MUST BE APPROVED IN WRITING BY THE ENGINEER. THE ENGINEER WILL NOT BE RESPONSIBLE FOR UNAUTHORIZED CHANGES TO OR USES OF THESE PLANS.
2. EXISTING EVENTS CENTER CANOPY CONSTRUCTION IS BELIEVED TO BE IN GENERAL CONFORMANCE WITH THE WEBER POINT FABRIC CANOPY STEEL DESIGN PACKAGE DRAWINGS SS1 - SS6 DATED 3/26/99 AND THE FOUNDATION DESIGN PACKAGE DRAWINGS FS1 - FS4, DATED 1/11/99. ALL DRAWINGS WERE PREPARED BY HUNTINGTON DESIGN ASSOCIATES. CONTRACTOR SHALL VERIFY DIMENSIONS ON THESE DRAWINGS AS NECESSARY BEFORE COMMENCING WORK AND NOTIFY ENGINEER OF ANY DISCREPANCIES.
3. THE PROJECT SPECIFICATIONS FORM A PART OF THE CONTRACT DOCUMENTS.
4. SPECIFICATIONS, CODES, AND STANDARDS NOTED IN THE CONTRACT DOCUMENTS SHALL BE OF THE EDITION ADOPTED IN THE GOVERNING BUILDING CODE, UNLESS OTHERWISE NOTED.
5. DIMENSIONS SHALL NOT BE SCALED OFF THE DRAWINGS.
6. THE CONTRACTOR SHALL BE RESPONSIBLE FOR DETERMINATION OF ITS METHODS AND PROCEDURES AND SHALL SUBMIT A STABILIZATION & DEMOLITION PROCEDURE FOR REVIEW PRIOR TO COMMENCING WORK. SITE VISITS BY THE ENGINEER WILL NOT INCLUDE INSPECTION OF THE MEANS OF WORK. THE OUTLINE ORDER OF WORK IS AS DESCRIBED BELOW.
 - A. INSTALL ERECTION CABLES EC1 & EC2
 - B. REMOVE ALL ITEMS TO BE DISCARDED (AS LISTED IN NO. 9, BELOW)
 - C. RETROFIT THE CONNECTION AS SHOWN IN DETAIL 4/DM1.
 - D. SECURE THE G1 & C1 CABLES, AS SHOWN ON THE CANOPY PLAN.
 - E. REMOVE DEBRIS FROM THE SITE, AND DISPOSE AS DESCRIBED IN ITEM 9, BELOW.
7. ALL CONSTRUCTION SHALL BE IN ACCORDANCE WITH THE CALIFORNIA BUILDING CODE, 2019 EDITION.
8. THE FOLLOWING ITEMS SHOULD BE RETAINED AND KEPT IN PLACE ON THE STRUCTURE.
 - a. WIRE ROPE CABLES OF 3/4" OR LARGER DIAMETER
 - b. GALVANIZED STEEL TERMINATION HARDWARE (INCLUDING PLATES, EYE NUTS, SHACKLES, & THREADED RODS) FOR CABLES AT MAST M2 PEAKS, INCLUDING THE FOLLOWING: R1, R2, R3, R4, V2.
 - c. CAT-EYE CABLE SANDWICH AND SADDLE PLATES (REF. DETAIL 3/SS5 OF THE 2/26/99 WEBER POINT FABRIC CANOPY STEEL DESIGN PACKAGE DRAWINGS.)
 - d. GALVANIZED STEEL SHACKLES, EYE NUTS, AND THREADED RODS.
 - e. LIGHT AND ELECTRICAL FIXTURES AND ASSOCIATED CONDUIT.
9. THE ITEMS LISTED BELOW WILL BECOME THE PROPERTY OF THE CONTRACTOR AND SHALL BE DISPOSED OF IN ACCORDANCE WITH FEDERAL & STATE LAWS, AS WELL AS LOCAL LAWS AND ORDINANCES AS DEFINED IN THE CITY OF STOCKTON CONSTRUCTION AND DEMOLITION STANDARDS ON THE FOLLOWING WEBPAGE: [HTTP://WWW.STOCKTONGOV.COM/GOVERNMENT/DEPARTMENTS/PUBLICWORKS/GARBCN.HTML](http://www.stockton.gov/government/departments/publicworks/garbcn.html)
 - a. 5/8" DIAMETER WIRE ROPE CABLES
 - b. PVC FABRIC MEMBRANE
 - c. ALUMINUM U CLAMPS AND CLAMP BARS
 - d. GALVANIZED FASTENERS AND TURNBUCKLES
 - e. TEMPORARY REPAIR WEB BELTS & COMEALONGS (REF. DET. 3/DM2).

CABLES

1. ALL WORK SHALL CONFORM TO THE LATEST EDITION OF ASCE 19, STRUCTURAL APPLICATIONS OF STEEL CABLES FOR BUILDINGS.
2. CABLES SHALL BE WIRE ROPE CONFORMING TO ASTM A603, CLASS A, EXTRA IMPROVED PLOW STEEL.
3. CABLE TERMINATION HARDWARE SHALL BE AS MANUFACTURED BY CROSBY OR APPROVED EQUAL.
4. MINIMUM CABLE BREAKING STRENGTH SHALL BE 16.1T.



SIDE VIEW
SCALE: 3/32" = 1'-0"



CANOPY PLAN VIEW
SCALE: 3/32" = 1'-0"

NOTE:
EXISTING CAT-EYE CABLES ARE TO BE REMOVED FROM THE STRUCTURE. ALL OTHER CABLES ARE TO REMAIN IN PLACE.

LEGEND:

- C - CATENARY CABLE
- G - GUY CABLE
- R - RIDGE CABLE
- V - VALLEY CABLE
- T - TIE BACK CABLE
- CE - CAT-EYE CABLE
- EC - ERECTION CABLE
- MAST - STEEL COLUMNS
- (N) - NEW CABLE



Consultant

Client

CITY OF STOCKTON

Project

**WEBER POINT
EVENTS CENTER
SHADE STRUCTURE
REHABILITATION -
PHASE 1**

Sheet Title

**CANOPY PLAN,
SIDE VIEW &
GENERAL NOTES**

Dwg By

VTP

Job #

-

Revision

No.

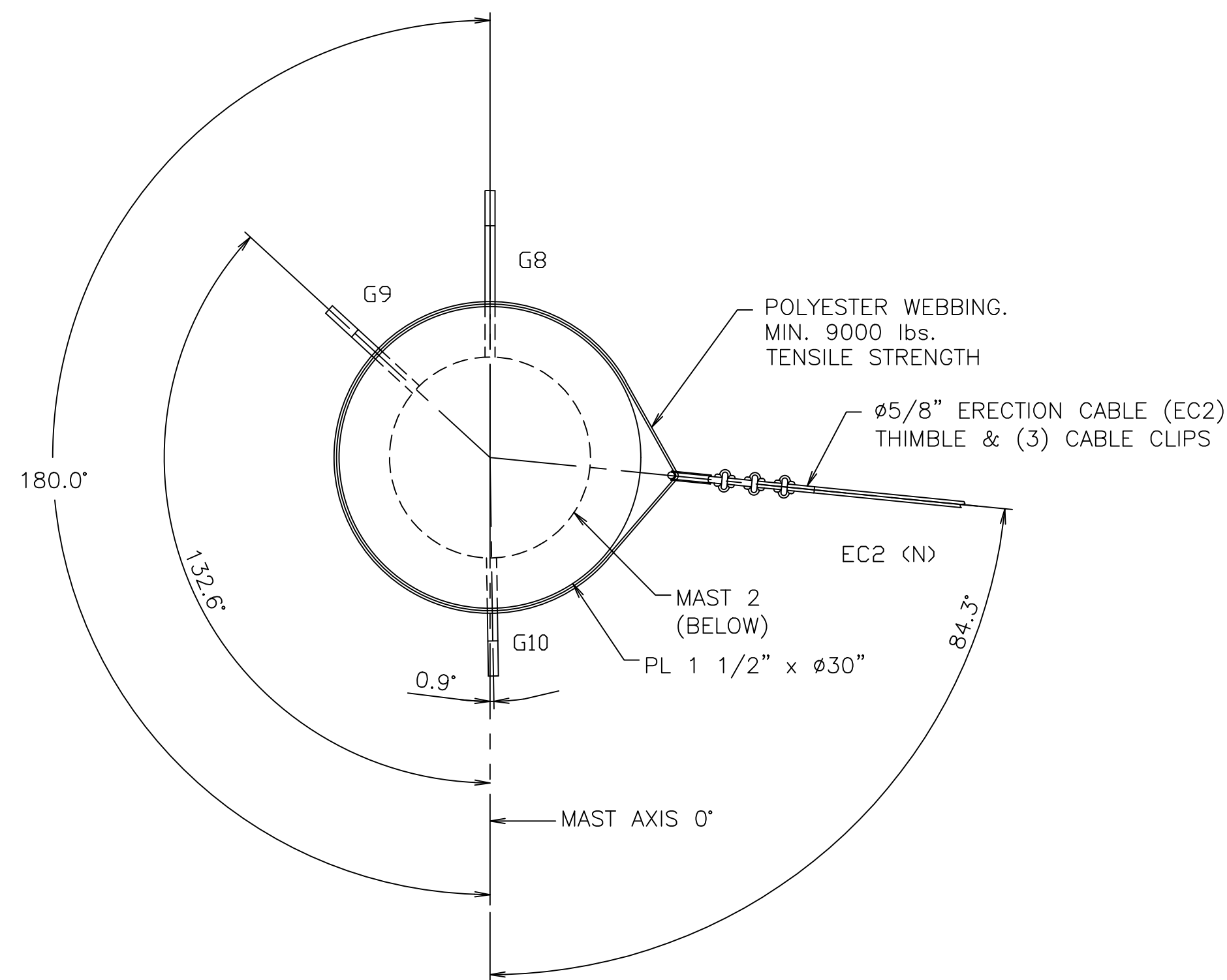
Rev.

Date

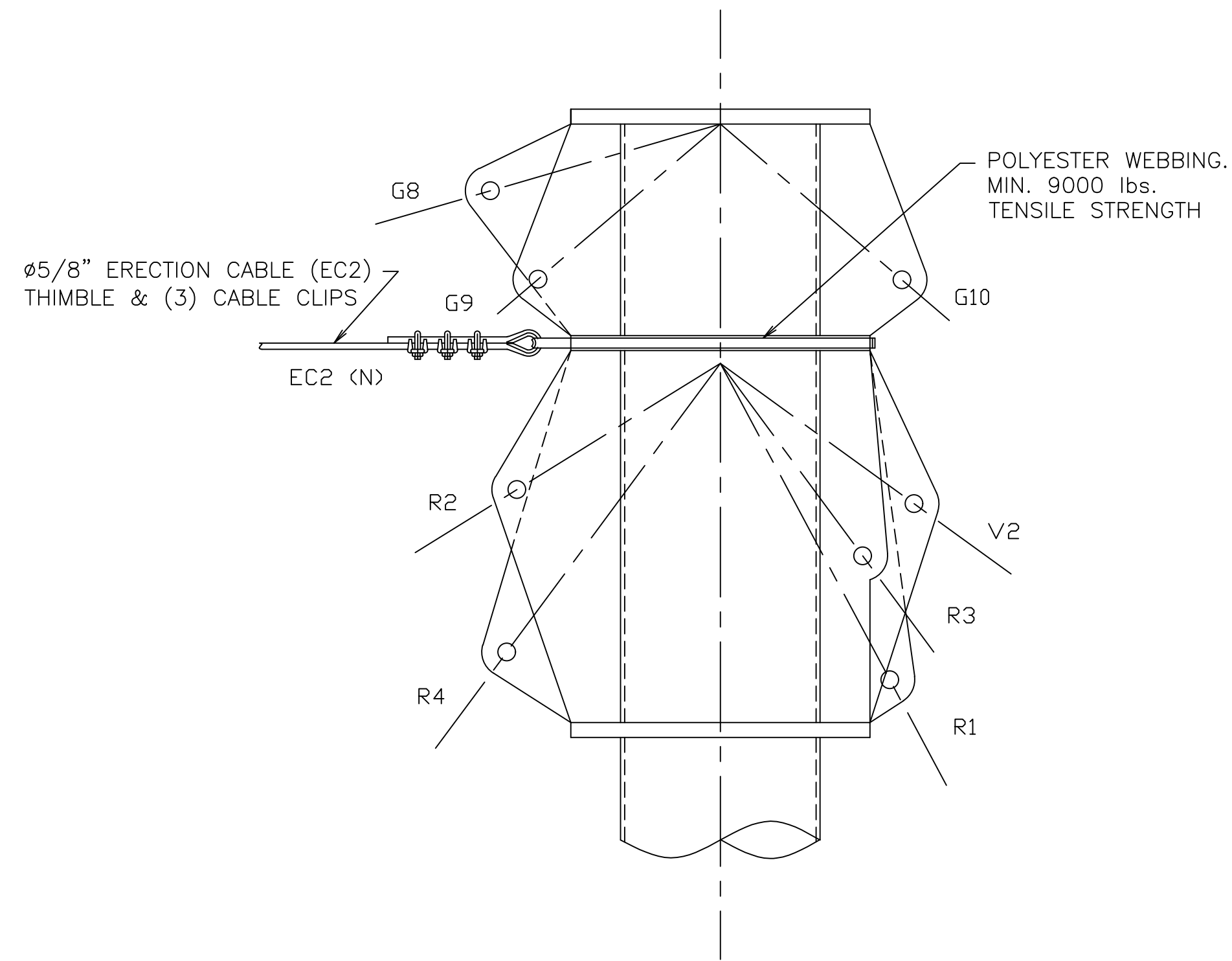
1/20/2021

Sheet

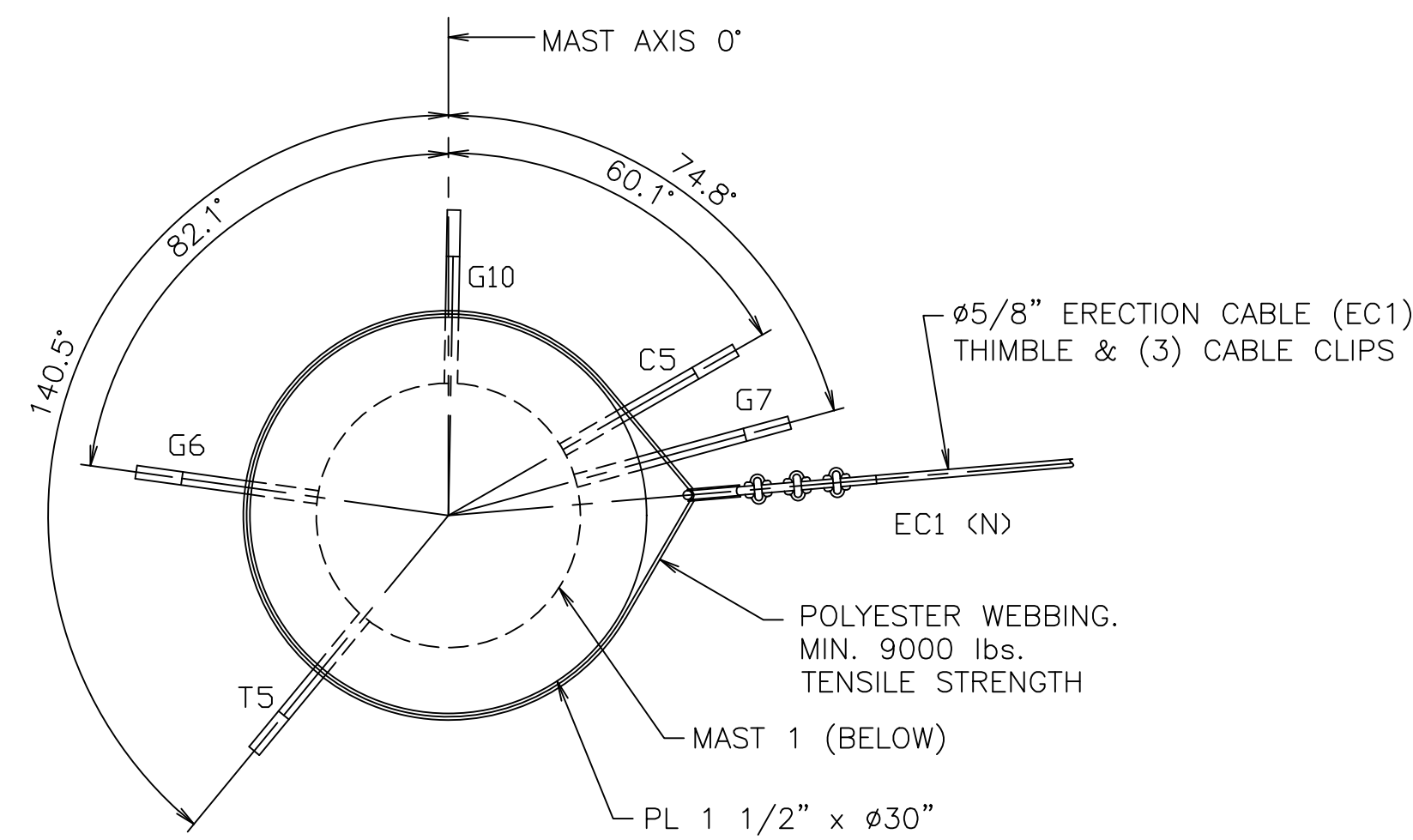
DM1



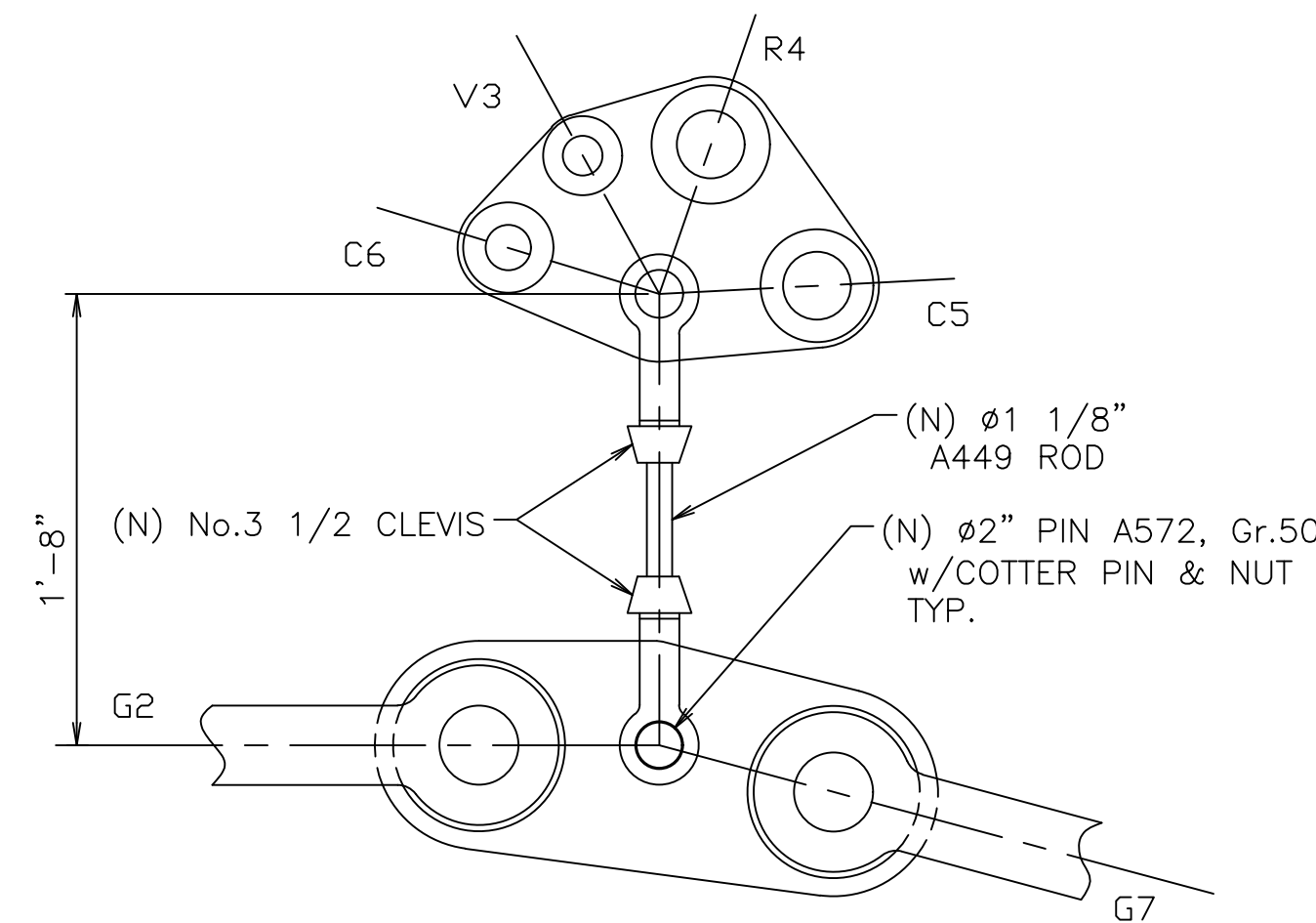
DETAIL 1
SCALE: 1" = 1'-0"
MAST 2 (SOUTH MAST SHOWN)



DETAIL 3
SCALE: 1 1/2" = 1'-0"
MAST 2 TOP (SOUTH MAST SHOWN)



DETAIL 2
SCALE: 1" = 1'-0"
MAST 1 (SOUTH MAST SHOWN)



NOTE:
1. REMOVE TEMPORARY WEB BELTS & COMEALONGS FOLLOWING INSTALLATION OF (N) PIN.
2. ALL CONSTRUCTION EXISTING EXCEPT AS NOTED (N).

DETAIL 4
SCALE: 1 1/2" = 1'-0"



Consultant

Client

CITY OF STOCKTON

Project

WEBER POINT
EVENTS CENTER
SHADE STRUCTURE
REHABILITATION -
PHASE 1

Sheet Title

DETAILS

Dwg By Chk By

VTP CH

Job # Date

- 1/20/2021

Revision

No.	Rev.	Date

Sheet

DM2